

GEARENCH™

PETOL™ HAMMERTIGHT™

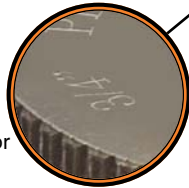
Wrench Retainer

(Patent #9,079,300)



See product video available for viewing at www.gearench.com/products/hammer-tight.asp

Each retainer is marked with applicable stud size for easy identification.



Key ring provides a tether point for drop prevention.



Spring loaded retaining plate allows the wrench to be indexed without unthreading the retainer.



Retaining plate is configured to work with offset & straight handle striking wrenches.



PETOL™ HAMMERTIGHT™ wrench retainers are safe and easy-to-use tools designed to hold a striking wrench (also called a slugging wrench or hammer wrench) on a nut for a **safer, hands free, one man operation**. The HAMMERTIGHT tool easily threads onto the stud. A spring loaded plate enables the wrench to be repositioned on the nut without removing the retainer.

PETOL HAMMERTIGHT wrench retainers are sold individually and in sets. Industry Standard sizes are available in black oxide coated steel and suitable for use with all brands of 6-pt. and 12-pt. straight or offset wrenches. (See our PETOL Striking Wrench and PETOL Striking Face Box Wrench at www.gearench.com.)



CATALOG NO.	FITS STUD SIZE	NUT SIZE	OVERALL LENGTH	WEIGHT
HTS58	5/8" - 11	1-1/16"	1-11/16"	8 ozs.
HTS34	3/4" - 10	1-1/4"	1-3/4"	10 ozs.
HTS78	7/8" - 9	1-7/16"	2"	13 ozs.
HTS100	1" - 8	1-5/8"	2-1/4"	1 lb.
HTS118	1-1/8" - 8	1-13/16"	2-5/16"	1-1/8 lbs.
HTS114	1-1/4" - 8	2"	2-1/2"	1-3/8 lbs.
HTS138	1-3/8" - 8	2-3/16"	2-11/16"	1-1/2 lbs.
HTS112	1-1/2" - 8	2-3/8"	2-7/8"	1-5/8 lbs.
HTS158	1-5/8" - 8	2-9/16"	3-1/16"	1-7/8 lbs.
HTS134	1-3/4" - 8	2-3/4"	3-1/16"	2-1/8 lbs.
HTS178	1-7/8" - 8	2-15/16"	3-1/8"	2-3/8 lbs.
HTS200	2" - 8	3-1/8"	3-3/16"	2-1/2 lbs.
HTS214	2-1/4" - 8	3-1/2"	3-1/4"	2-7/8 lbs.
HTS212	2-1/2" - 8	3-7/8"	3-11/16"	3-5/8 lbs.

CATALOG NO.	DESCRIPTION	WEIGHT
HTS34178	Set of 10, 1 each of HTS34 thru HTS178	22 lbs.

NOTE: Metric as well as custom sizes and pitches available upon request.

Place wrench on nut.



Thread retainer onto stud.



P.O. Box 192 • 4450 South Highway 6
Clifton, Texas 76634 U.S.A.
(254)675-8651 • fax (254)675-6100 • sales@gearench.com

