

PETOL™ Suckerrod Elevator

REAS025

Data Book

Warning

Improper use of sucker rod elevators may result in injury or death. Do Not Exceed Rated Load of 25 Tons. Follow safe practices listed in Data Book.

**GEARENCH™
P.O. Box 192
4450 South Highway 6
Clifton, Texas 76634
Phone: (254) 675-8651
Fax: (254) 675-6100**

© 2013 by GEARENCH. All rights reserved

Form REAS025 revision 03/12/13

Table of Contents

PETOL™ Suckerod Elevator Description	1
Warranty	2
Safe Practices and Procedures	4
Responsibility	4
Safety	4
Elevator Inspection	5
Operation	5
Replacement Parts	7
Responsibility of Distributors	8
Certificates	9

PETOL™ Suckerrod Elevator Description

The REAS025 PETOL™ Suckerrod Elevator hangs from the sucker rod hook, which is attached to the traveling block or the service or drilling rig. The drawworks of the rig move the elevator up and down the rig's derrick to install and remove sucker rod. The elevator may also be used on or around the rig floor for handling sucker rod.

There are three body sizes available to work with specific sucker rod sizes, 5/8" – 3/4", 3/4" – 7/8", and 1". The size range is stamped on each body.

The elevator has a rated capacity of 25 tons for heavy duty use.

The REAS025 offers the following features:

- An integrated latch mechanism consisting of front and rear hand-operable retainers and retainer springs to provide simple, fast, and smooth operation.

- Special heat treated alloy materials to provide long life.

Warranty

What Is Covered

GEARENCH™ tools are expressly warranted to you, the purchaser, to be free of defects in material and workmanship.

How Long Coverage Lasts

This express warranty lasts for the lifetime of the GEARENCH tool. Warranty coverage ends when the tool becomes unusable for reasons other than defects in workmanship or material.

How Can You Get Warranty Service

To obtain the benefit of this warranty, contact a GEARENCH sales representative in Clifton, Texas.

GEARENCH · 4450 South Highway 6 · P.O. Box 192 · Clifton, TX 76634

What Will We Do To Correct Problems

Warranted products will be repaired or replaced, at GEARENCH's option, and returned at no charge to you, the original purchaser; or, if after three attempts at repair or replacement during the warranty period, the product defect in material or workmanship persists, you can elect to receive a full refund of your original purchase price for the product.

What Is Not Covered

Defects, failures or conditions that are due to normal wear and tear, abuse or misuse, are not covered by this limited warranty. In addition, this limited warranty is in lieu of all other warranties, express or implied, verbal or written. To the maximum extent allowed by law GEARENCH disclaims all implied warranties, including implied warranties of merchantability and/or fitness for a particular purpose. GEARENCH also specifically denies any liability for any incidental damages and/or consequential damages, including but not limited to property damage to property other than the product itself, loss of sales profits, down time, costs or any other damages measurable in money, whether or not included in the foregoing enumeration.

Please be advised that some states do not allow the exclusion or limitation of incidental or consequential damages, so this limitation or exclusion may not apply to you. This warranty gives you specific rights, and you may also have other rights, which vary from state to state, province to province, or country to country.

Are Personal Injuries Covered

In the event you, someone working for you, or any other person sustain a personal injury as a result of using the GEARENCH tool, GEARENCH limits its potential liability for such a claim or injury to the fullest extent allowed by law, and disclaims and denies any liability for such personal injury.

Please be advised that some states do not allow the exclusion or limitation of liability for personal injuries, so the above limitation or exclusion may not apply to you, or the individual claiming injury.

No Other Express Warranty Applies

This GEARENCH LIMITED WARRANTY is the sole and exclusive warranty, express or implied for GEARENCH products. No employee, agent, dealer or other person is authorized to alter, modify, expand or reduce the terms of this warranty or to make any other warranty on behalf of GEARENCH.

Law Applicable

All matters related to the sale and/or use of the GEARENCH tool that is the subject of this limited warranty, along with the construction and enforcement of the terms of this limited warranty itself, shall be subject to the substantive and procedural laws of the state of Texas, not the conflicts of laws provisions of Texas, but rather the laws of Texas themselves.

Forum Selection Clause

Any dispute arising out of the sale and/or use of the GEARENCH tool that is the subject of this limited warranty shall be presented in the form of a claim or lawsuit to the offices of GEARENCH in Clifton, Bosque County, Texas. No claim or suit may be brought against GEARENCH, arising out of the sale and/or use of the tool, or arising out of the terms of this warranty, except in such forum. Purchase and/or use of the GEARENCH tool makes you subject to the benefits and limitations of this limited warranty. Accordingly, any writ, judgment or other enforcement, obtained from a jurisdiction, county, parish, state or federal court or other country, other than from the forum identified above, shall be void and unenforceable against GEARENCH.

Arbitration Clause

In the event of dispute or claim arises out of the sale and/or use of the GEARENCH tool that is the subject of this limited warranty, or arises out of the interpretation or enforcement of the terms and conditions of this limited warranty, such dispute shall be submitted to binding arbitration pursuant to the rules of the American Arbitration Association. If required to accomplish the purpose of this Arbitration clause, the purchaser hereby expressly waives any right to demand trial by jury.

Complete Agreement

This express limited warranty contains the entire agreement regarding express or implied warranties related to the GEARENCH tool that is the subject of it. No writing or language contained in the purchase order or any other document of the purchaser, or invoice of GEARENCH or any intermediate seller, shall be construed as modifying, in any way, the rights and liabilities contained in this limited warranty. GEARENCH expressly disclaims any obligations expressed in any customer purchase order or document that are contrary to the terms and limitations of this warranty.

Severability

If any term or limitation contained in this limited warranty is deemed unenforceable by law, then the term shall be severed from the remaining portions of the limited warranty which shall remain enforceable.

All communications to GEARENCH regarding the use of the tool and any aspect of the sale of the tool of this limited warranty should be addressed to GEARENCH.

GEARENCH · 4450 South Highway 6 · P.O. Box 192 · Clifton, TX 76634

Safe Practices and Procedures

Responsibility

"It is the responsibility of the employer to train the employee in the proper selection and use of sucker rod elevators, and to ensure that they are selected and used in that manner. A part of the job instruction program should therefore be detailed training in the proper use of tubing elevators."

"Employers are responsible for the safe condition of tools and equipment used by employees, including tools and equipment which may be furnished by employees." - (Source: OSHA 1910.242A)

Safety

While we pride ourselves on the quality and dependability we build into GEARENCH™ tools and products, we caution users that it is only prudent to know and follow the simple rules of safety when using our products, or anyone else's.

Always follow safe practices and procedures in accordance with the recommendations of OSHA, The National Safety Council (NSC), The Hand Tools Institute (HTI), The National Association of Chain Manufacturers (NACM), The International Association of Drilling Contractors (IADC), Etc. All applicable Governmental rules, regulations or restrictions, now in effect or which may be promulgated, take precedence over the suggestions in this publication. The information in this publication is designed to supplement standard safe practices and procedures, not in lieu of, or replacement thereof.

WARNING

Improper use of sucker rod elevators may result in injury or death. Follow safe practices listed below. (Source OSHA.gov)

Potential hazards when installing and removing production sucker rods include:

Hazard

1 - Getting fingers or hands pinched in or between rod wrenches, rod elevators, tongs, rod hook, rod transfer, and rod finger.

Possible Solution

1 - Ensure that workers are instructed in proper hand and finger placement when making and breaking rod connections or setting rods on the rod fingers.

Hazard

2 - Being struck by dropped objects.

Possible Solution

2 - Wear proper personal protective equipment.

2 - Use extra caution while people are working overhead.

2 - Avoid carrying tools while climbing the derrick ladder. Raise tools with a line to any worker above the derrick floor.

2 - Ensure that all tools and equipment being used are secured with the proper safety lines.

Elevator Inspection

It is recommended that the elevator be visually inspected on a daily basis for signs of corrosion and damaged components. Remove all external dirt and grease daily. Examine the elevator bail for deformation. If the elevator bail is worn below 1-3/8", the elevator needs repair. Test the operation of the elevator latch mechanism daily. If the latch appears too loose, repair may be required. **Do not grind or remove metal from any surface of the elevator.** Contact GEARENCH for all suspected damage and repair.

Inspect daily for any visual evidence of external cracks. Visible cracks indicate potential failure points. The elevator should be immediately removed from service and contact GEARENCH to determine if repair is possible.

The retainer pins should be oiled to maintain smooth operation.

It is recommended that the elevator body trunnions be magnetic particle inspected on an annual basis for indications of cracking.

Operation

To attach the elevator to the sucker rod, the elevator operator stands on one side of the sucker rod with the elevator on the opposite side. The operator reaches around the sucker rod with one hand on either side of the sucker rod. The elevator is gripped by the bail, and the operator pulls the elevator to the sucker rod, so that the sucker rod is automatically latched in the center of the elevator. **It is important for the elevator operator to visually verify that the sucker rod is completely inside the elevator and that the latch retainers are in place, or premature release of the sucker rod could occur resulting in bodily injury and/or dropping the sucker rod down the well requiring fishing of the dropped sucker rod string.**



To remove the elevator from the sucker rod, the sucker rod is secured and the elevator is lowered a few inches below the swollen sucker rod neck. The elevator operator holds the bail with one hand and unlatches the elevator with the other hand. The elevator operator then pulls or pushes the elevator body from the sucker rod.

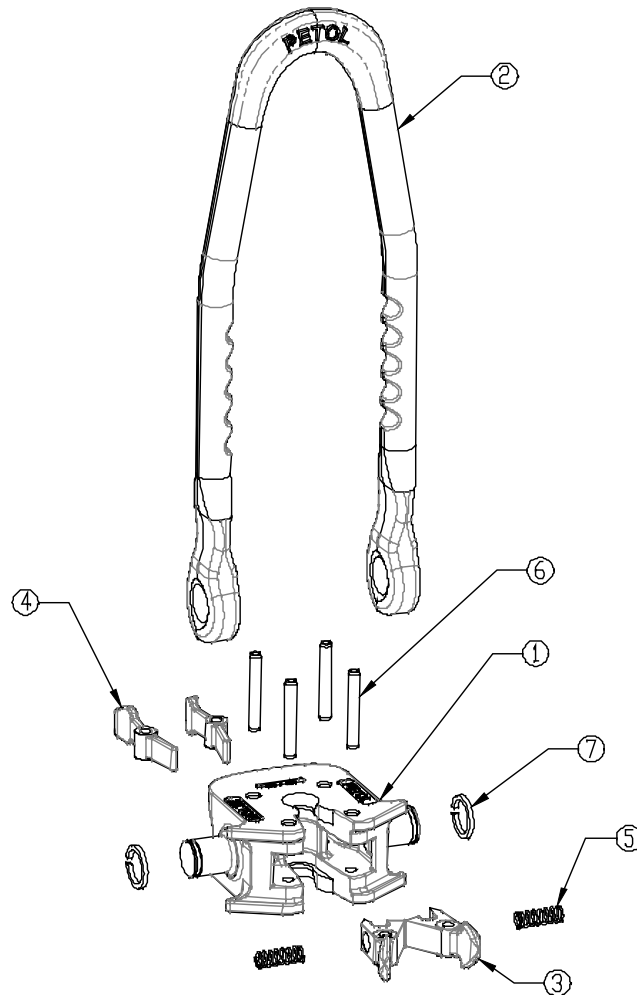
WARNING:

Under no circumstances should the maximum working load of 25 Tons be exceeded.

It is wise to practice connecting and disconnecting the elevator onto the sucker rod to observe the latching operation, to become familiar with and develop a routine, and to know the elevator is set.

Replacement Parts

Repairs should only be made by GEARENCH™ or a repair facility authorized by GEARENCH.



Item	Qty	Part No.	Description
1A	1	REBS025-058	Body 5/8-3/4" rod
1B	1	REBS025-034	Body 3/4-7/8 rod
1C	1	REBS025-100	Body 1" rod
2	1	REH025	Bail
3	2	REF025	Front Latch
4	2	RER025	Rear Latch
5	2	HS32	Latch Spring
6	4	HXP003	Latch Pin
7	2	HXRC125	Retaining Collar

Responsibility of Distributors

GEARENCH DISTRIBUTORS ARE RESPONSIBLE FOR FORWARDING THIS DATA BOOK AND OTHER GEARENCH PRODUCT INFORMATION RELATING TO THE INDIVIDUAL PRODUCT, THROUGH THE CHANNELS OF DISTRIBUTION, DOWN TO AND INCLUDING THE INDIVIDUAL USING THE PRODUCT.

NOTE:

In view of the fact that the actual use determines whether safety requirements have been met, the ultimate responsibility to comply rests with the end user.

Certificates